

## 1 Before You Begin

**WARNING:** Before you set up and operate your Dell PowerVault system, review the safety instructions that shipped with your system.

### Read the Dell Software License Agreement

- Before using your system, read the Dell Software License Agreement that came with the system.
- You must consider any media of Dell installed software as BACKUP copies of the software installed on your system.
- If you do not accept the terms of agreement, call the customer assistance telephone number. For customers in the United States, call 800-WWW-DELL (800-999-3355). For customers outside the United States, see [support.dell.com](http://support.dell.com) and select your country or region from the bottom of the page.

For documentation and information updates, see the Dell Support website at [support.dell.com/manuals](http://support.dell.com/manuals).

### Locating Your System Service Tag

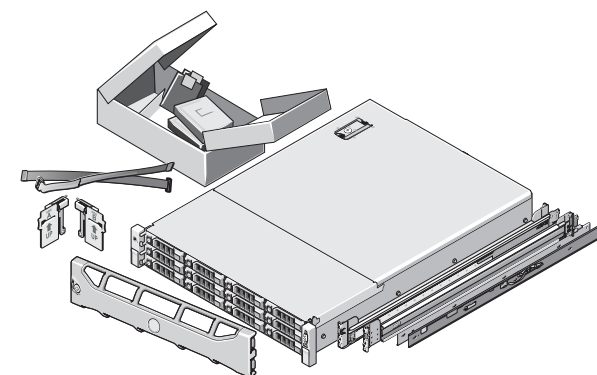
- Your system is identified by a unique Express Service Code and Service Tag number. The Express Service Code and Service Tag are found on the front of the system. Pull out the information tag to view the Express Service Code and Service Tag.
- Save this information for future reference. This information is used by Dell to route support calls to the appropriate personnel.

**NOTE:** The illustrations in this document are not intended to represent a specific system.



## 2 Verifying System Components

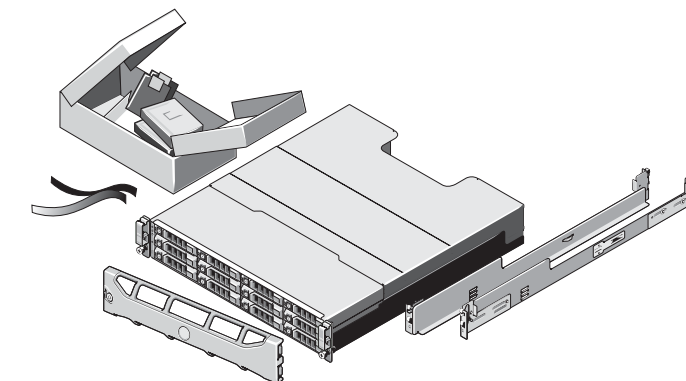
### System Components



#### Dell PowerVault DL2300 System

Includes:

- System bezel
- Power cables (2)
- Power cable retention straps (2)
- Optional mounting rails (1 pair)
- Cable management arm (optional)
- System media and other documentation



#### Dell PowerVault MD Storage Enclosure (Optional)

Includes:

- System bezel
- Power cables (2)
- SAS cables (2)
- Power cable retention brackets (2)
- Optional mounting rails (1 pair)

Check for documentation and information updates on [support.dell.com/manuals](http://support.dell.com/manuals).  
Always read the updates first because they often supersede information in other documents.

## 3 Pre-installation Requirements

### Network

- An active network with available Ethernet cables and connections.
- A static IP address and DNS server IP address, if not provided by Dynamic Host Configuration Protocol (DHCP).
- Depending on the options selected during setup, do the following:
  - Add the **DL Backup to Disk Appliance** to a Windows Domain Controller.
  - Assign one IPv4 address, if you are connecting to an IPv6 network.

### User Account

To set up the **DL Backup to Disk Appliance**, use an account with administrator privileges.

### Licenses

Locate the backup application media kit and any optional licenses with your **DL Backup to Disk Appliance**. For more information about licenses, see the *Dell PowerVault DL Backup to Disk Appliance Powered by CommVault Simpana User's Guide* at [support.dell.com/manuals](http://support.dell.com/manuals).

### Software Compatibility

If the **DL Backup to Disk Appliance** is connected to an existing backup environment, the existing backup environment must use the same software version that is installed on the backup appliance.

## 4 Installing the DL Backup to Disk Appliance Hardware

### Install the DL Backup to Disk Appliance hardware in the following order:

**Note:** Do not turn on any system(s) before you complete installing the following:

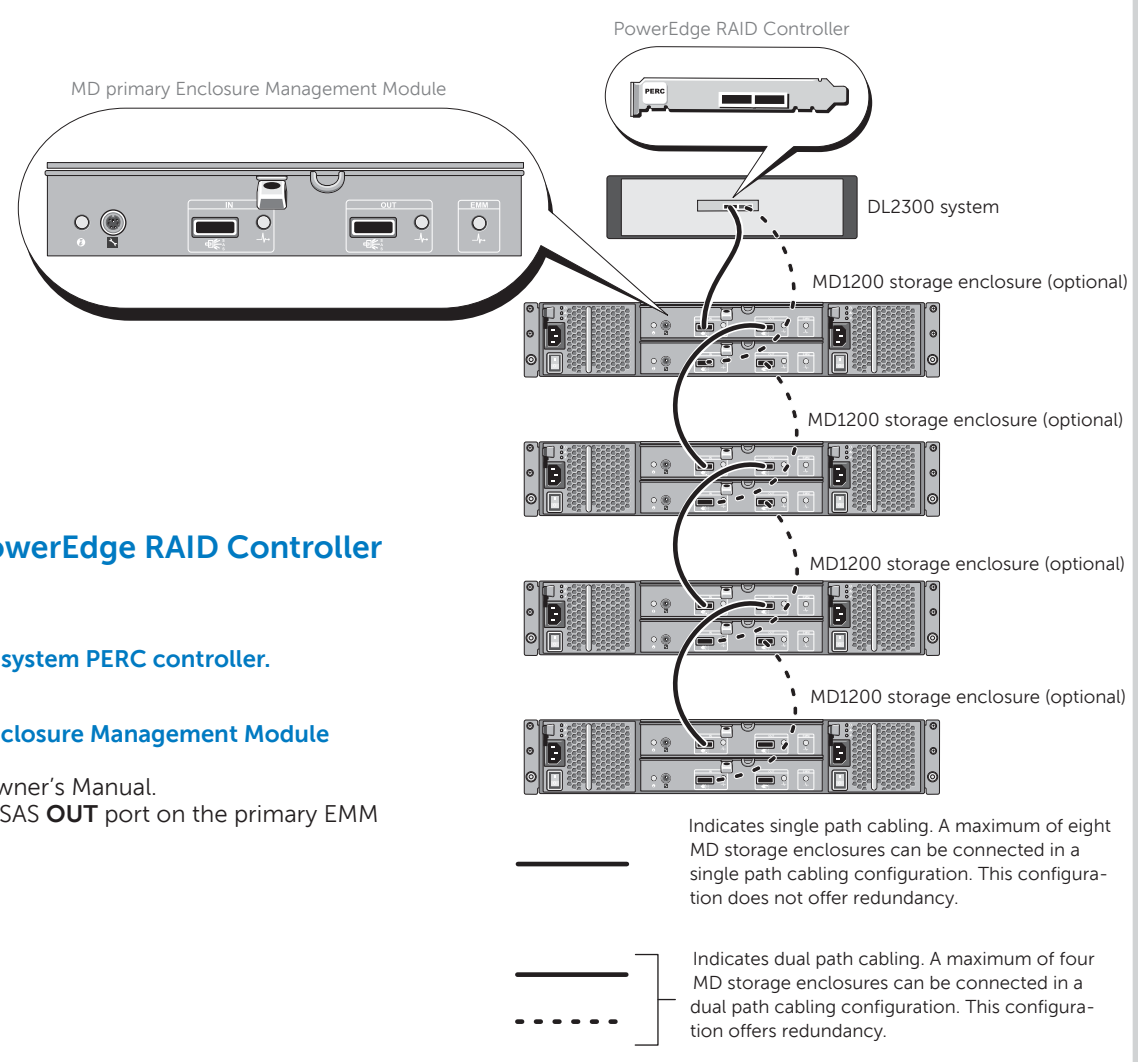
- DL Backup to Disk Appliance hardware
- DL2300 system to the MD storage enclosures (optional)

- 1. Install the rails for the Dell PowerVault DL2300 system.**  
For information about installing the rails for the PowerVault DL2300 system, see the Rack Installation Instructions that shipped with the DL2300 rail kit.
- 2. Set up the PowerVault DL2300 system.**  
For information about setting up the PowerVault DL2300 system, see the *Dell PowerVault DL2300 Getting Started Guide* that shipped with the system.
- 3. Set up the optional PowerVault MD storage enclosure(s):**
  - a. Install the rails for the Dell PowerVault MD storage enclosure(s).**  
For information about installing the rails for the PowerVault MD storage enclosure, see the Rack Installation Instructions that shipped with the storage enclosure rail kit.
  - b. Set up the PowerVault MD storage enclosure(s).**  
For information about setting up the PowerVault MD storage enclosure, see the *Dell PowerVault MD 1200 Storage Enclosures Getting Started Guide* that shipped with the storage enclosure.
  - c. Connect the PowerVault DL2300 system to the PowerVault MD storage enclosure(s).**  
For information about connecting the PowerVault DL2300 system to the PowerVault MD storage enclosure, see section 5.
- 4. Install the optional cable management arm.**  
For information about installing the Cable Management Arm (CMA), see the CMA Installation Instructions that shipped with the CMA kit.  
  
To connect your PowerVault DL2300 system to the PowerVault MD storage enclosure, proceed to section 5. If your solution does not include a PowerVault MD storage enclosure, proceed to section 6.



# Setting Up Your PowerVault DL Backup to Disk Appliance (continued)

## 5 Connecting the PowerVault DL2300 System to the PowerVault MD Storage Enclosures (Optional)

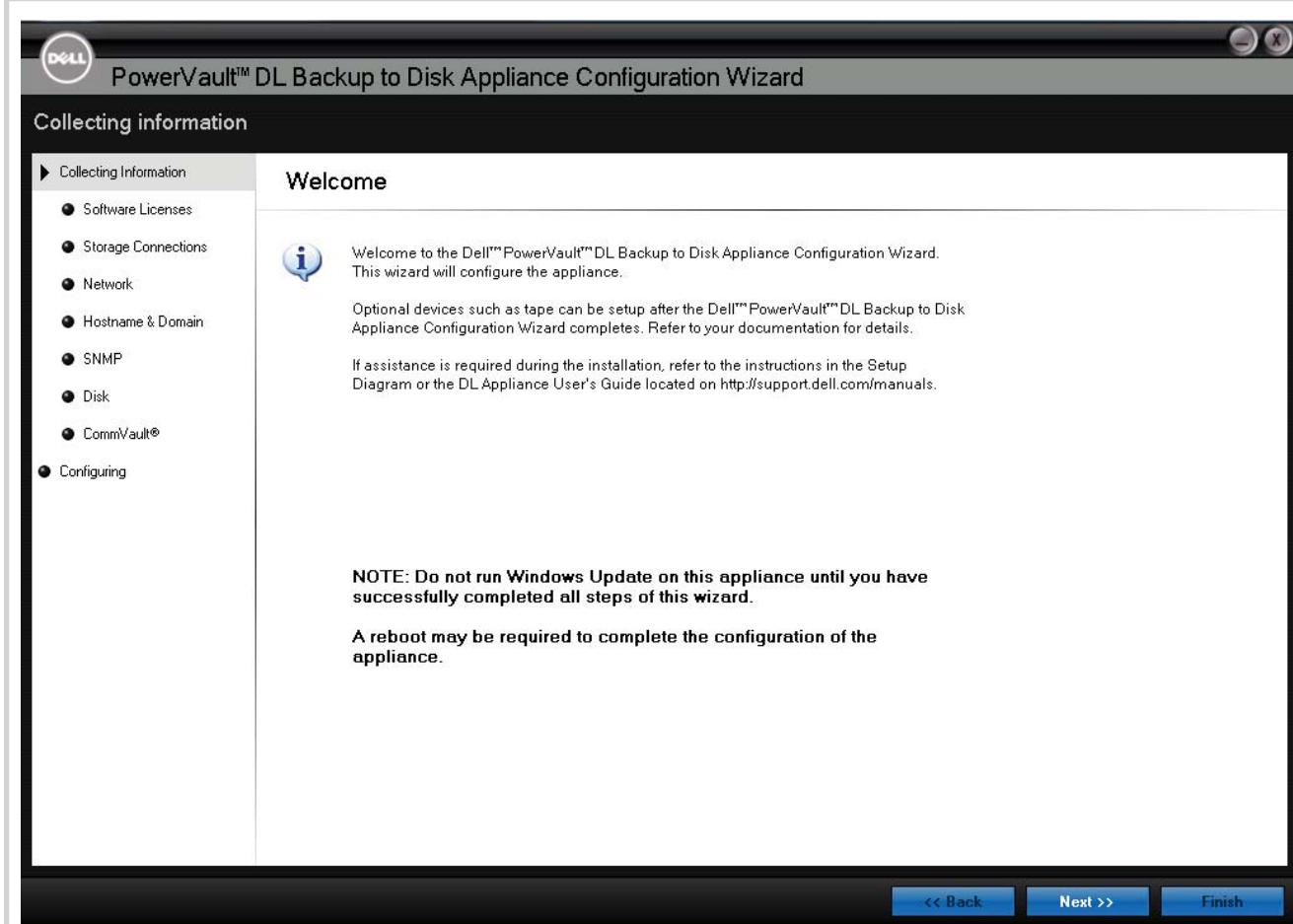


### Connect the PowerVault MD storage enclosure to the PowerEdge RAID Controller (PERC), located in the PowerVault DL2300 system:

1. Connect one end of the SAS cable to port 0 on the PowerVault DL2300 system PERC controller.
2. Connect the other end of the SAS cable to the IN port of the primary Enclosure Management Module (EMM) on the PowerVault MD storage enclosure.  
To locate the primary EMM, see the PowerVault MD storage enclosure Owner's Manual. If more than one PowerVault MD storage enclosure is used, connect the SAS OUT port on the primary EMM to the SAS IN port on the next enclosure.

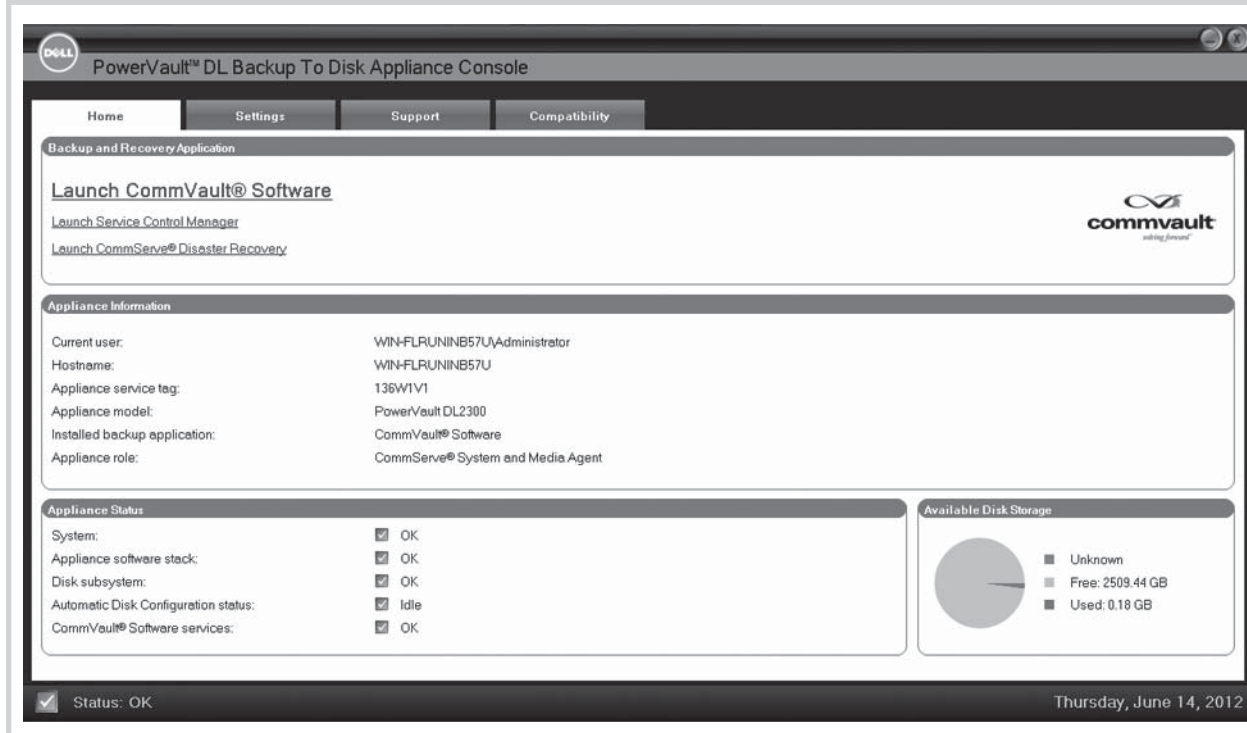
**NOTE:** Do not connect tape devices to the PERC controller.

## 6 Configuring the PowerVault DL2300 Software



- Turn on the components in the following order:
1. MD storage enclosure(s)
  2. DL2300 system and monitor
- The DL2300 system prompts you to enter a password.
- After the password is confirmed, the **PowerVault DL Backup to Disk Appliance Configuration Wizard** is displayed.
- Click **Next** and follow the instructions on the screen to complete the software configuration.

## 7 Launching the DL Backup to Disk Appliance Console



After the **PowerVault DL Backup to Disk Appliance Configuration Wizard** is complete, the **PowerVault DL Backup to Disk Appliance Console** is displayed.

Click **Launch Commvault Software** to launch the backup application.

## 8 Additional Information

### Important Updates

- Note:** Before installing any updates, complete setting up the **DL Backup to Disk Appliance**.
- For latest operating system updates, go to the Microsoft website at [update.microsoft.com](http://update.microsoft.com).
  - To reinstall or update Dell software, download the **Dell PowerVault DL Backup to Disk Appliance Recovery and Update Utility** from [support.dell.com/support/downloads](http://support.dell.com/support/downloads).

### Documentation

Title	Description
Getting Started Guide	The Getting Started Guide provides an overview of system features, setting up your solution, and technical specifications. This document is shipped with your system and is also available at <a href="http://support.dell.com/manuals">support.dell.com/manuals</a> .
Dell PowerVault DL Backup To Disk Appliance Powered by CommVault Simpna User's Guide	The CommVault User's Guide provides information about deploying the appliance using CommVault and recovering the appliance from software and hardware failures.
Dell PowerVault DL2300 Owner's Manual	The Owner's Manual provides information about solution features and describes how to troubleshoot the system and install or replace system components. This document is available at <a href="http://support.dell.com/manuals">support.dell.com/manuals</a> .
Rack Installation Instructions	The rack documentation included with your rack solution describes how to install your system into a rack. This document is shipped with your rack solution and is also available at <a href="http://support.dell.com/manuals">support.dell.com/manuals</a> .
CommVault Release Notes	The CommVault Release Notes provides information about deploying the appliance using CommVault and recovering.

